

11.7.3 Access to Medical Services

A healthy community promotes preventive care and access to neighborhood level medical care through the design of its built environment.

Community Health Impacts

The availability of primary care has a role in preserving good health and preventing morbidity and hospitalizations from chronic and communicable diseases, including asthma and diabetes. Ensuring that medical services are accessible and located throughout the city affects each resident's ability to meet their medical needs and the needs of their families in a timely fashion. The availability of medical services throughout the city can also reduce vehicle trips with benefits to air quality, community noise and injuries.

Current Conditions

About one third of Mountain View residents can access a major medical facility within 30 minutes using public transit. [See Figure 11-9]

Residential communities with convenient transit access to medical facilities are concentrated south of the Central Expressway along major arterials such as El Camino Real and connectors like Castro Street and Grant Road. Medical facilities in the city range from small clinics and doctor's offices to urgent care centers and large hospitals with emergency rooms and trauma centers. This analysis included a range of medical professional services including acupuncturists; chiropractors; counselors; dentists; orthodontists; marriage therapists; medical centers, doctors and medical professionals; optometrists; pharmacies; physical therapists; physicians; and psychologists.

There is a concentration of medical professionals in proximity to the Camino Medical Group Mountain View Center on El Camino Real in the eastern portion of the city; the El Camino Hospital in the southern portion of the city; and downtown Mountain View along Castro Street. Smaller medical centers and practitioner concentrations are located at the Camino Medical Group Los Altos Center. In addition, there are a number of medical professional offices along major arterials such as El Camino Real, Castro Street, Grant Road and San Antonio Road.

Opportunities

In developing goals, policies and implementing actions for the General Plan, the City may consider strategies to enhance neighborhood level and citywide medical services. Mountain View could promote access to medical services and facilities by:

- Providing accessible and reliable transportation for residents who do not live in proximity to medical centers. These improvements may include:
 - Working with the Santa Clara Valley Transportation Authority (VTA) to improve bus service along routes that connect to existing medical centers;
 - Working with the VTA to provide additional bus service within the Monta Loma/Farley/Rock Street and Moffett/Whisman Road areas;
 - Improving bus and paratransit services from senior residential facilities to medical facilities;
 - Locating new senior residential facilities in close proximity to medical facilities or VTA service; and
 - Increasing funding for Rotocare mobile clinic.

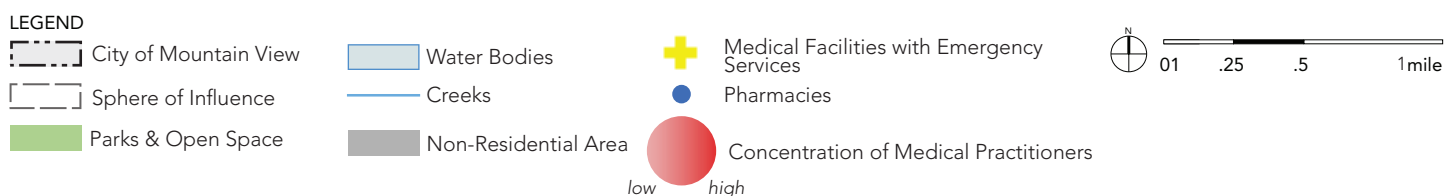
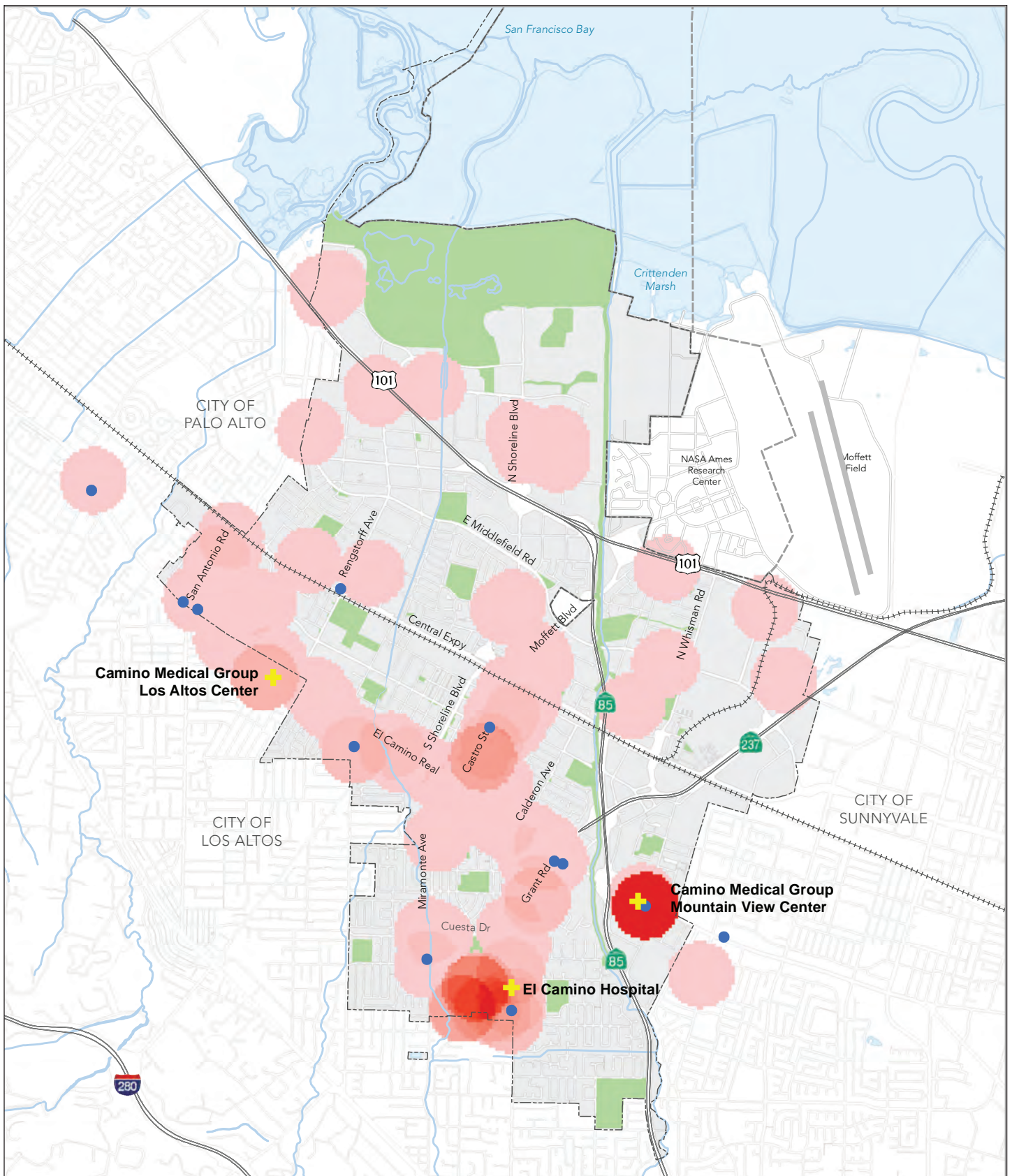


Figure 11-9: Medical Facilities and Practitioners

January 2010